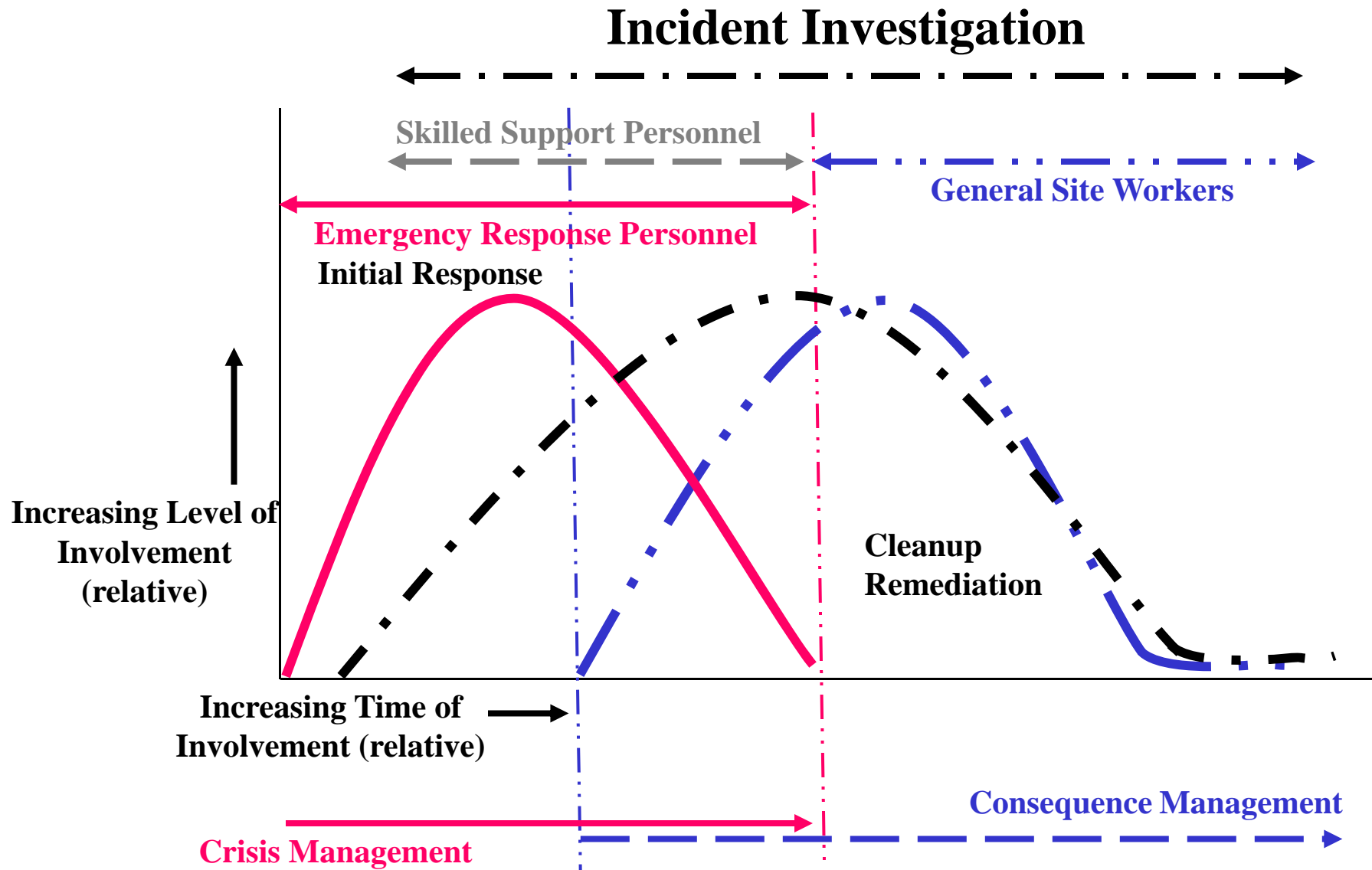


Management of Complex Investigations

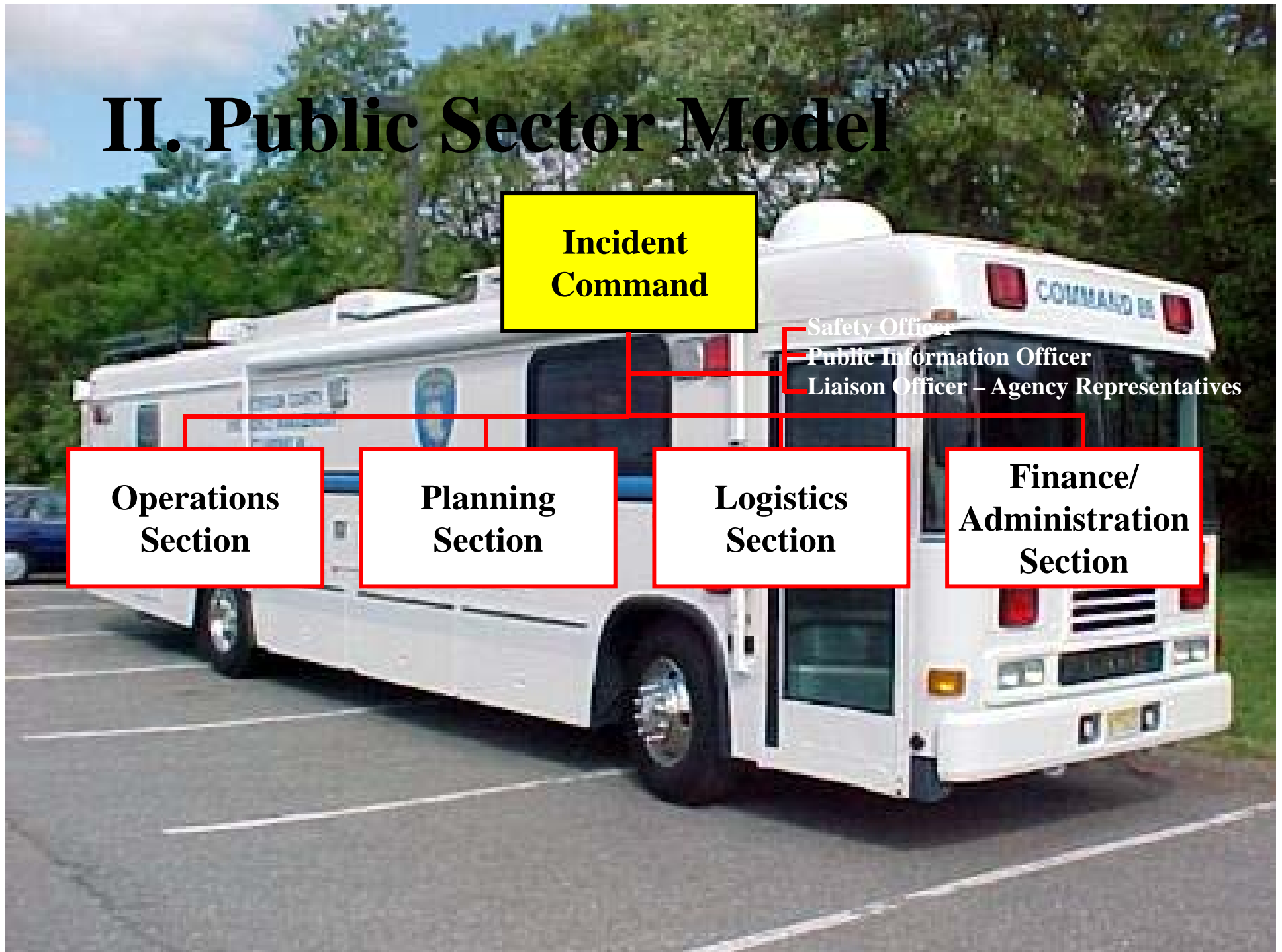


Ron Hopkins, CFEI, CFPS
TRACE Fire Protection and Safety
Richmond, KY 40475

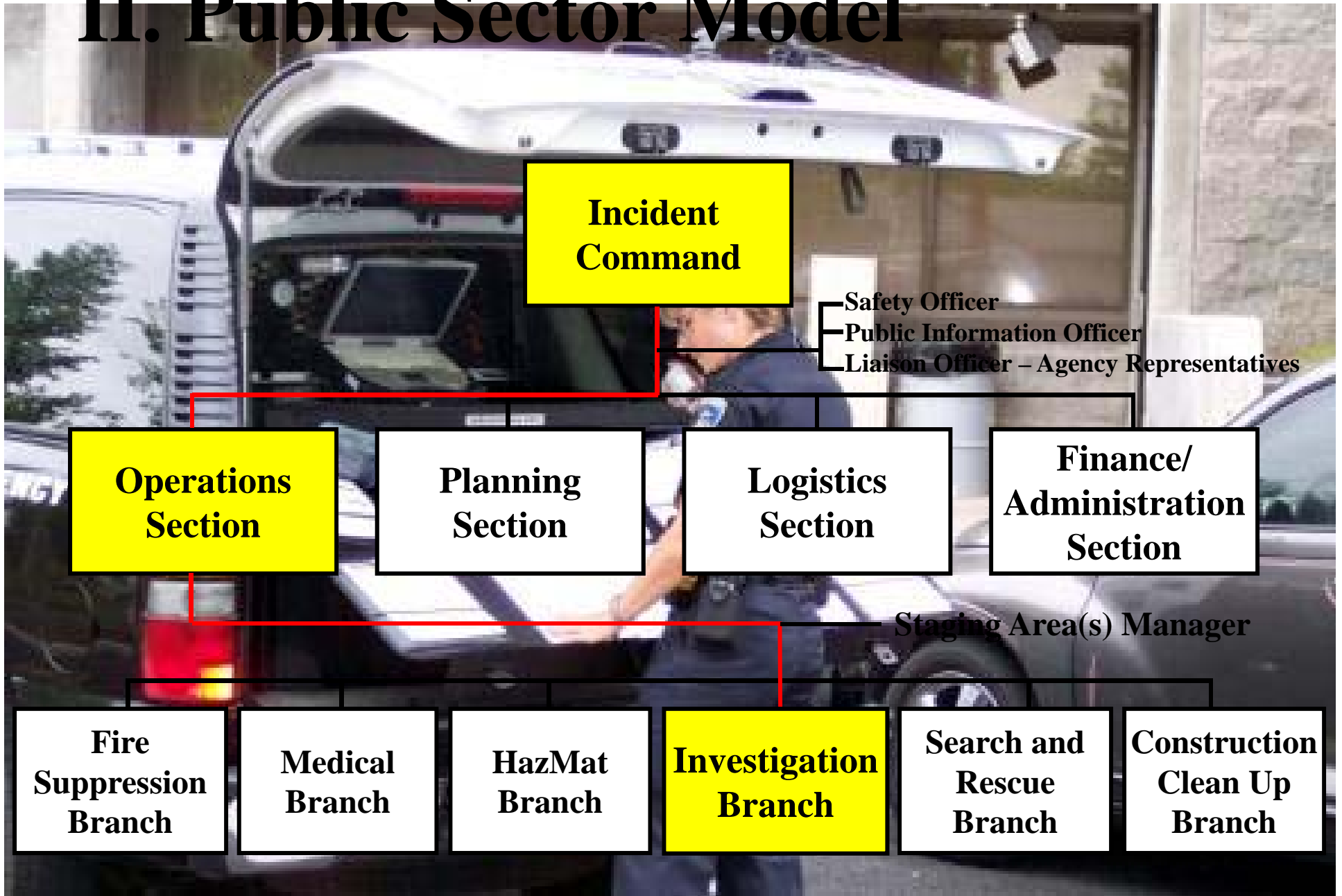
Anatomy of a Disaster Event



II. Public Sector Model



II. Public Sector Model



Public Sector Model

**Incident
Command**

Safety Officer
Public Information Officer
Liaison Officer – Agency Representatives

**Operations
Section**

**Planning
Section**

**Logistics
Section**

**Finance/
Administration
Section**

Staging Area(s) Manager

**Fire
Suppression
Branch**

**Medical
Branch**

**HazMat
Branch**

**Investigation
Branch**

**Search and
Rescue
Branch**

**Construction
Clean Up
Branch**

**Safety
Group**

**Diagram
Group**

**Photography
Group**

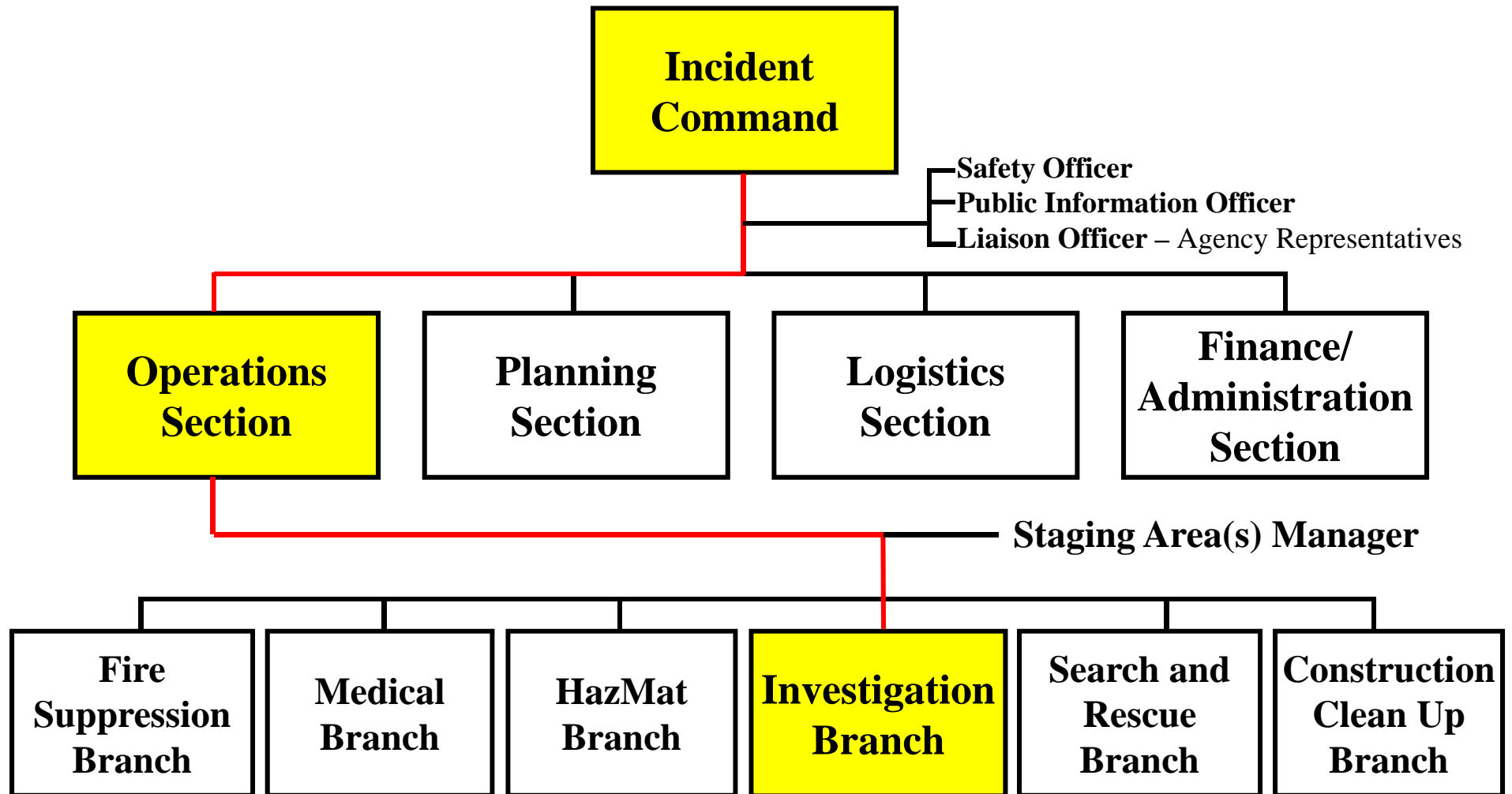
**Evidence
Group**

**Scene
Search
Group**

**Interview
Group**

**Logistics
Group**

II. Public Sector Model



Public Sector Model

**Investigation
Branch**

**Safety
Group**

**Diagram
Group**

**Photography
Group**

**Evidence
Group**

**Scene
Search
Group**

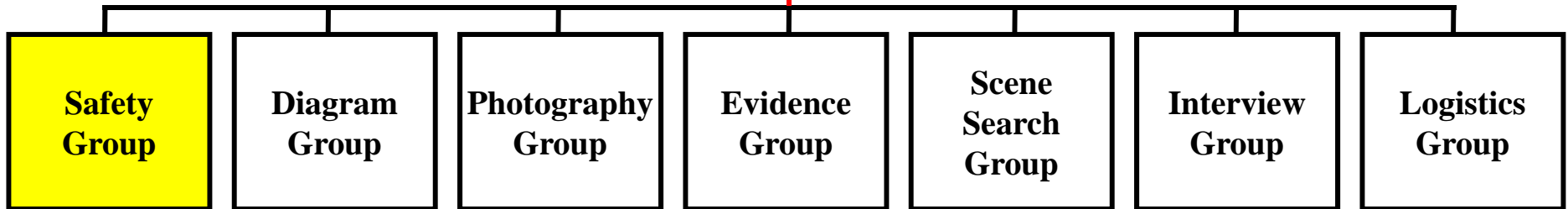
**Interview
Group**

**Logistics
Group**

**Chart is function based and does not indicate the
number of people that will be required to complete a
task .**

Public Sector Model

Investigation Branch

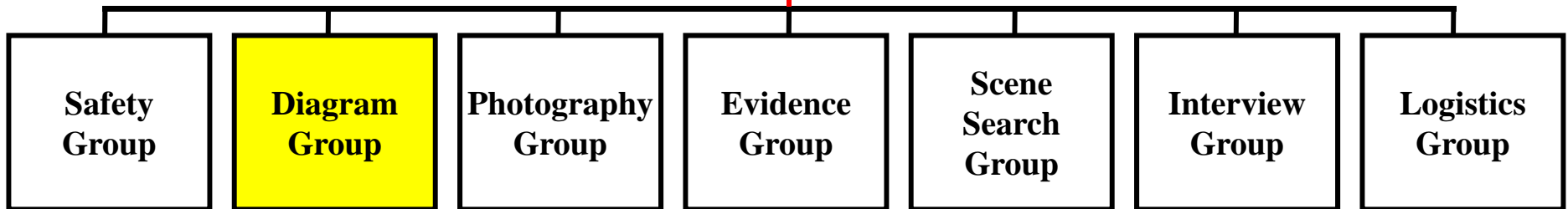


- **Coordinates Scene Safety for those in the Investigation Branch**
- **Works with the Incident Safety Officer (Manager) to provide a safe work place.**
- **Safety Briefings and Audits**

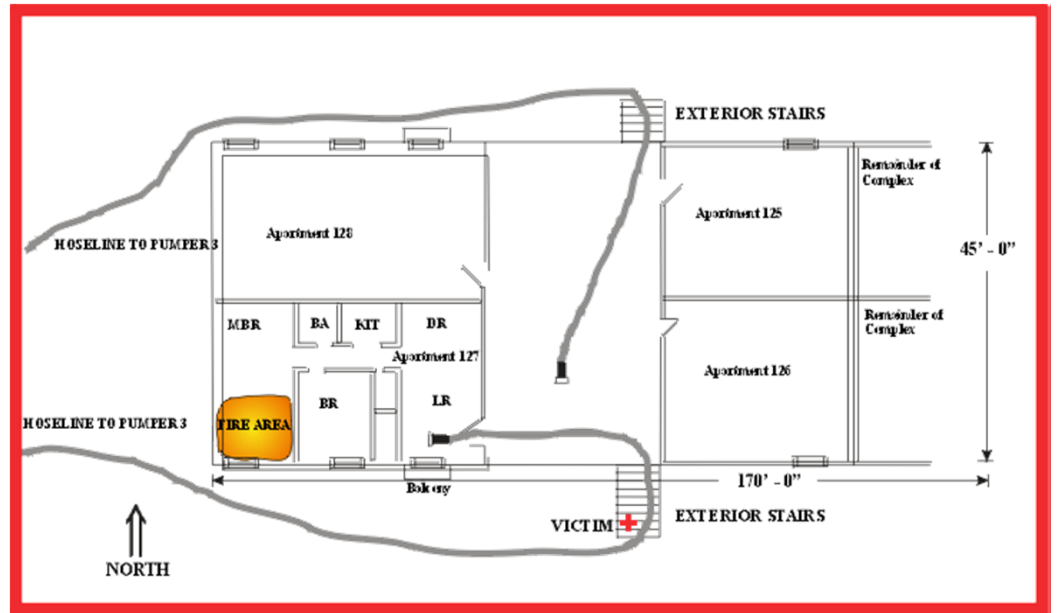


Public Sector Model

Investigation Branch

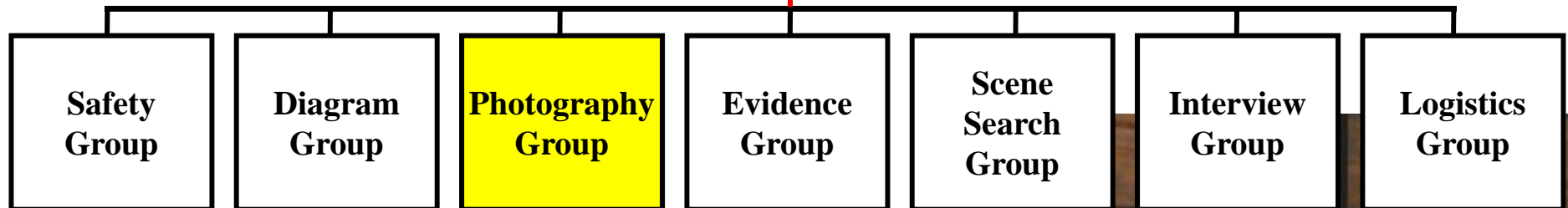


Coordinates the completion and storage of diagrams completed by the individual search teams as needed.

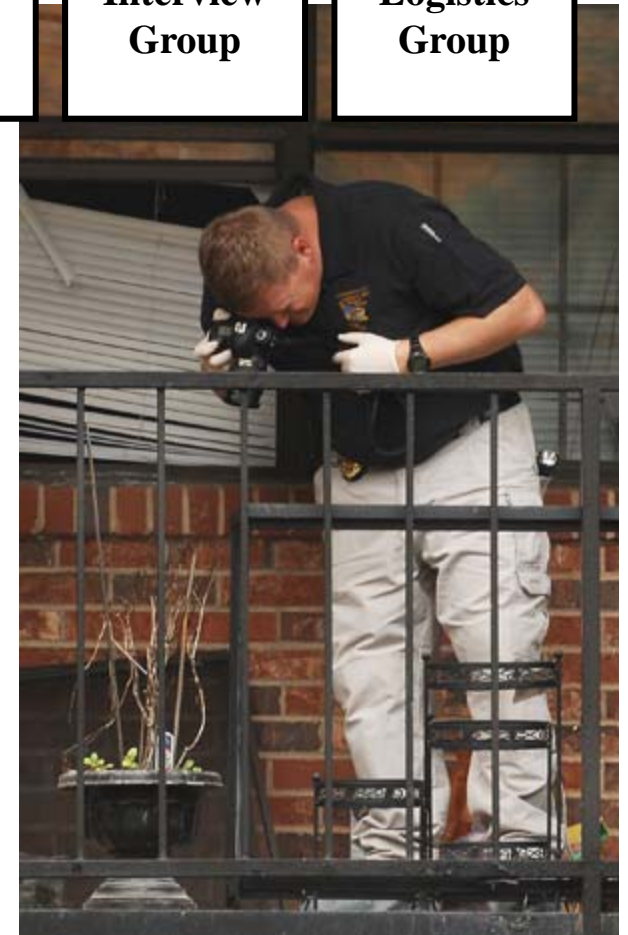


Public Sector Model

Investigation Branch



Coordinates and manages all aspects of photography at the incident scene including cataloging, storage and retrieval systems.



Public Sector Model

Investigation Branch

Safety
Group

Diagram
Group

Photography
Group

Evidence
Group

Scene
Search
Group

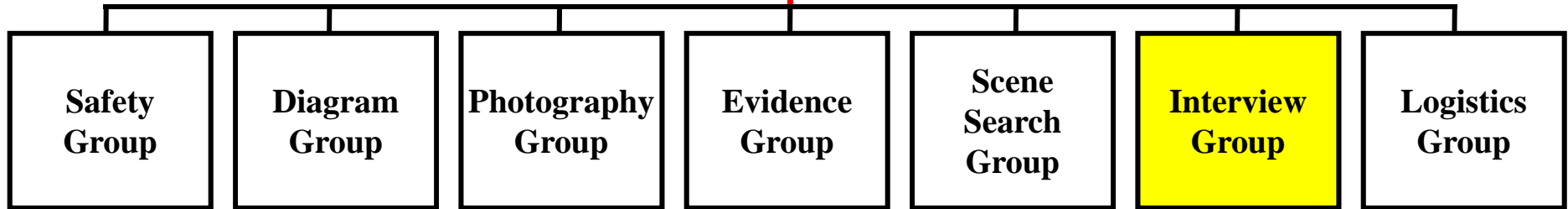
Interview
Group

Logistics
Group

- Coordinates the collection, documentation and storage of evidence collected during the investigation.
- Supplies evidence technicians to each of the Investigation Teams.

Public Sector Model

Investigation Branch



Coordinates both on and off scene interviews and data collection to aid in the investigation process.

Public Sector Model

Investigation Branch

Safety
Group

Diagram
Group

Photography
Group

Evidence
Group

Scene
Search
Group

Interview
Group

Logistics
Group

- Maintains communication with the Logistics Section to identify and supply resource needs.
- Manages the flow of resources to each of the Groups within this Branch.

B. Private Sector Model

Function Based

Model Expand and Contract

**Investigation
Manager**

Safety Manager

Legal & Public Information

Liaison Officer – Agency Representatives

**Operations
Section**

**Planning
Section**

**Logistics
Section**

**Finance/
Administration
Section**

Staging Area(s) Manager

**Safety
Branch**

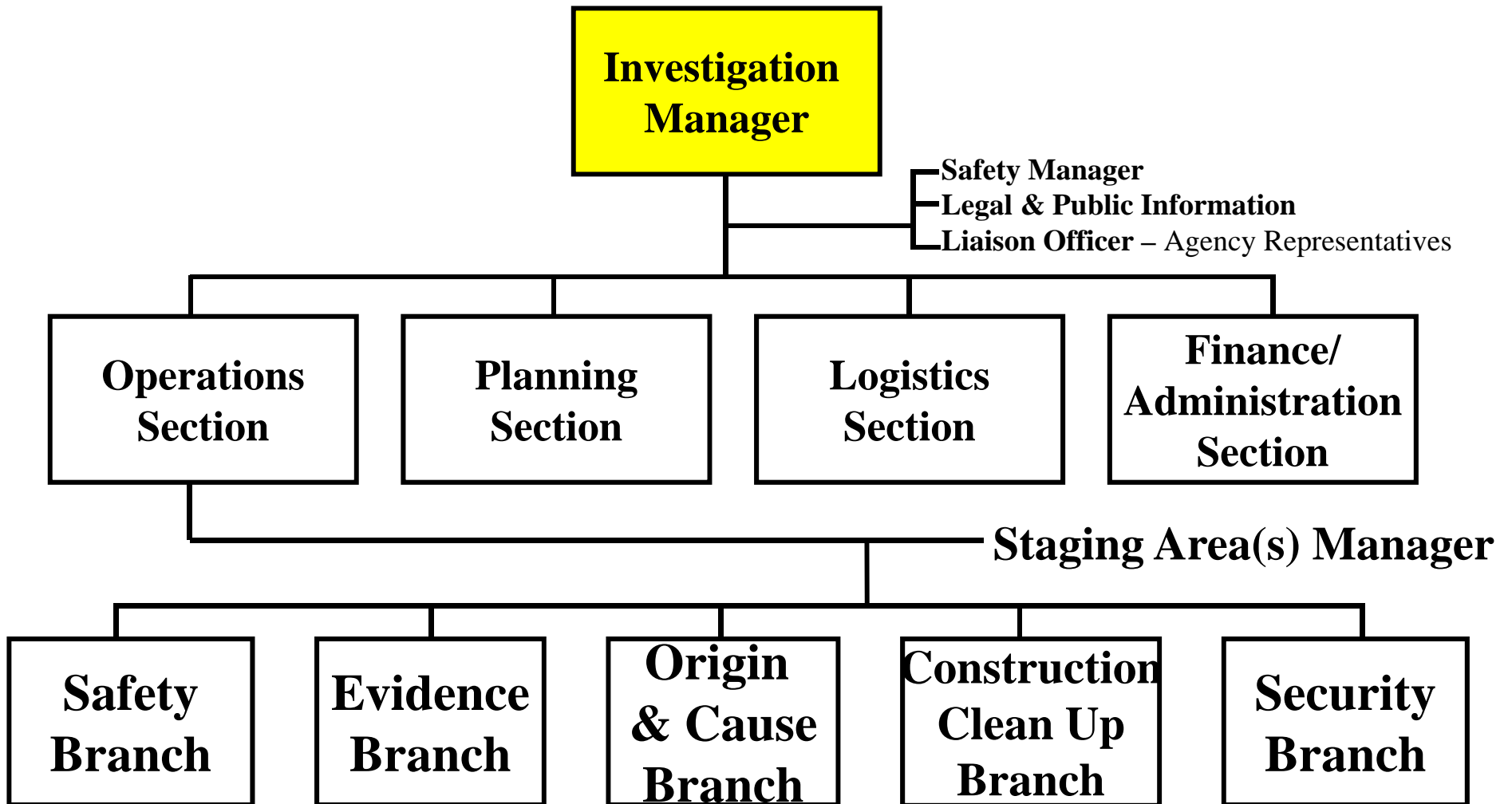
**Evidence
Branch**

**Origin
& Cause
Branch**

**Construction
Clean Up
Branch**

**Security
Branch**

B. Private Sector Model



Private Sector Model

**Investigation
Manager**

Safety Manager
Legal & Public Information
Liaison Officer – Agency Representatives

**Operations
Section**

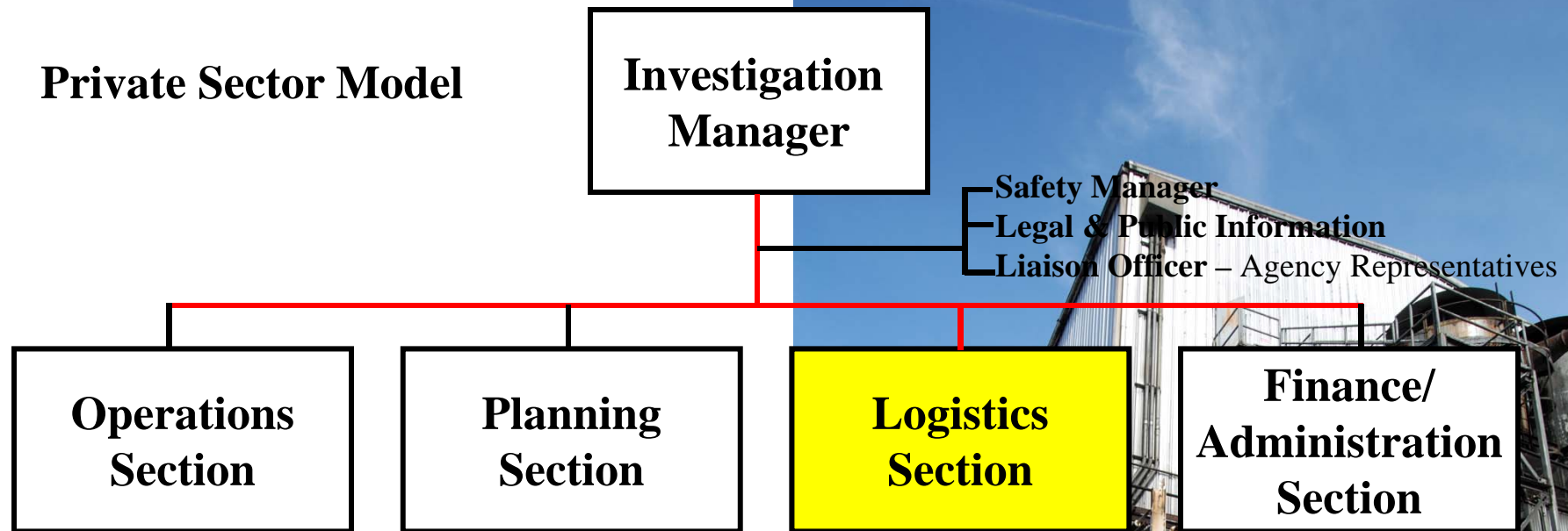
**Planning
Section**

**Logistics
Section**

**Finance/
Administration
Section**

- **Gather and Analyze information so that everything will be ready the next day and the days following**

Private Sector Model



- **Logistics can make or break an investigation.**
- **Logistics Section provides the resources and services required to support investigation activities.**

Private Sector Model

**Investigation
Manager**

Safety Manager
Legal & Public Information
Liaison Officer – Agency Representatives

**Operations
Section**

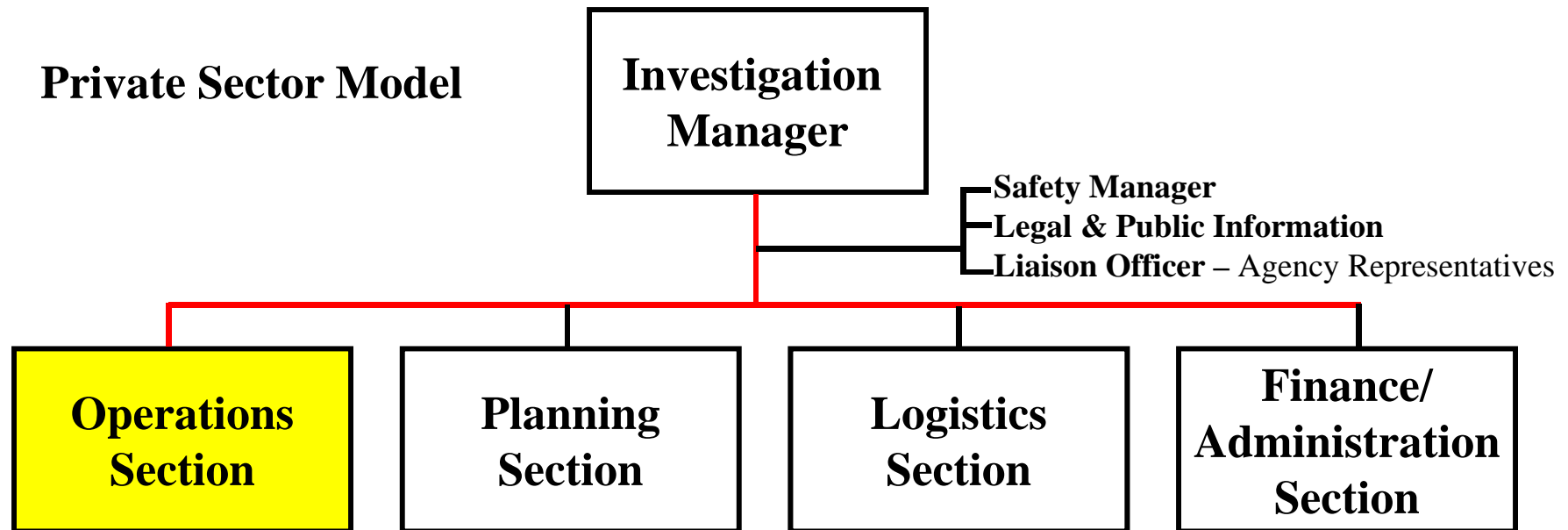
**Planning
Section**

**Logistics
Section**

**Finance/
Administration
Section**

- **Tracking Time and Costs.**
- **Financial Cost Analysis**
- **Invoicing and Payment**

Private Sector Model



- **Responsible for coordinating and managing all of the functions identified in the section and communicating the progress of the incident and needs to the Incident Manager and other Branch Managers.**
- **Schedules briefings and manages information flow between each of the Branch Managers and Investigation Teams as organized.**



Private Sector Model

**Investigation
Manager**

Safety Manager
Legal & Public Information
Liaison Officer – Agency Representatives

**Operations
Section**

**Planning
Section**

**Logistics
Section**

**Finance/
Administration
Section**

Staging Area(s) Manager

**Safety
Group**

**Evidence
Group**

**Origin
& Cause
Group**

**Construction
Clean Up
Group**

**Security
Group**

Scene Safety
**Safety Equipment
& Supplies**
Safety Briefings
Safety Audits

Private Sector Model

Investigation Manager

Safety Manager
Legal & Public Information
Liaison Officer – Agency Representatives

Operations
Section

Planning
Section

Logistics
Section

Finance/
Administration
Section

Staging Area(s) Manager

Safety
Branch

Evidence
Branch

Origin
& Cause
Branch

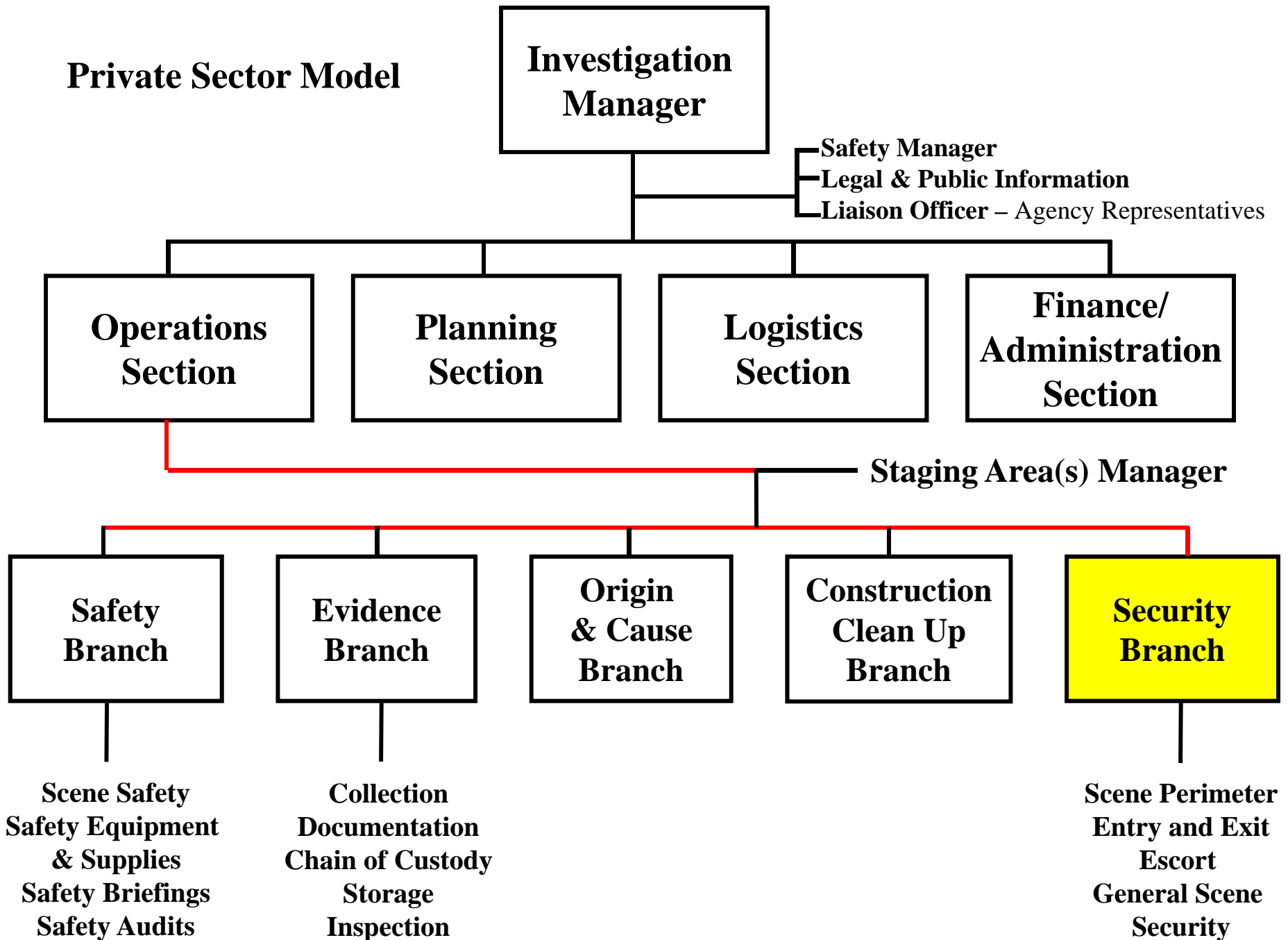
Construction
Clean Up
Branch

Security
Branch

Scene Safety
Safety Equipment
& Supplies
Safety Briefings
Safety Audits

Collection
Documentation
Chain of Custody
Storage
Inspection

Private Sector Model



Private Sector Model

**Investigation
Manager**

Safety Manager
Legal & Public Information
Liaison Officer – Agency Representatives

**Operations
Section**

**Planning
Section**

**Logistics
Section**

**Finance/
Administration
Section**

Staging Area(s) Manager

**Safety
Branch**

**Evidence
Branch**

**Origin
& Cause
Branch**

**Construction
Clean Up
Branch**

**Security
Branch**

Scene Safety
Safety Equipment
& Supplies
Safety Briefings
Safety Audits

Collection
Documentation
Chain of Custody
Storage
Inspection

Heavy Equipment
Equipment
Operators
Tools & Operators
Labor Force

Scene Perimeter
Entry and Exit
Escort
General Scene
Security

Private Sector Model

**Investigation
Manager**

Safety Manager
Legal & Public Information
Liaison Officer – Agency Representatives

**Operations
Section**

**Planning
Section**

**Logistics
Section**

**Finance/
Administration
Section**

Staging Area(s) Manager

**Safety
Branch**

**Evidence
Branch**

**Origin
& Cause
Branch**

**Construction
Clean Up
Branch**

**Security
Branch**

Scene Safety
Safety Equipment
& Supplies
Safety Briefings
Safety Audits

Collection
Documentation
Chain of Custody
Storage
Inspection

Investigation
Scene Search
Documentation
Interviews
ID Evidence

Heavy Equipment
Equipment
Operators
Tools & Operators
Labor Force

Scene Perimeter
Entry and Exit
Escort
General Scene
Security

1. Origin & Cause Branch Manager

**Origin & Cause
Group
Manager**

**Owner's
Investigation
Team**

**Investigation
Scene Search
Documentation
Interviews
ID Evidence**

**Interested Party
Investigation
Team**

**Investigation
Scene Search
Documentation
Interviews
ID Evidence**

**Interested Party
Investigation
Team**

**Investigation
Scene Search
Documentation
Interviews
ID Evidence**

**Interested Party
Investigation
Team**

**Investigation
Scene Search
Documentation
Interviews
ID Evidence**

Copyright © October 2012 Ron Hopkins

All Rights Reserved

TRACE

Fire Protection and Safety Consultants, Ltd.



123 Redwood Drive

Richmond, Kentucky 40475

859-624-1136 Voice

859-623-6863 FAX

rhopkins1@earthlink.net

www.TRACEfireandsafety.com